



TritonTM

Seating System



ZIPPIE RS



ZIPPIE SALSA M

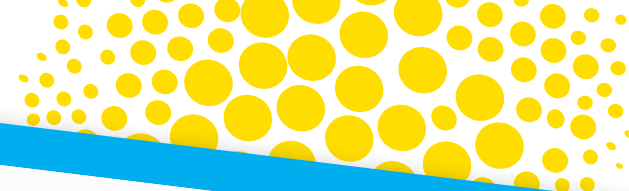




- Easy to handle with a short wheelbase and an adjustable push bar
- Compact for great indoor use



- Excellent indoors with a mid-wheel drive base
- Stability assures peace of mind outdoors
- Great outdoors thanks to six wheeled suspension





WHAT IS TRITON?

Triton is a fully modular seating system designed to cater for individuals who have complex seating and postural needs. Its unique design, form and function is underpinned by years of experience and continued development with a commitment to helping children and their respective carers and parents achieve greater levels of independence.

Triton is designed for a broad spectrum of users needs with their many different environments in mind. The completely modular system and full adjustability means that each system can be individually tailored to meet functional and clinical requirements.

Standard features include:

- Removable backrest
- Multi-directional sacral pad
- Adjustable seat length
- Adjustable back height
- Width adjustment
- Back angle adjustment
- Adjustable angle leg rest mounting
- Choice of flat, ramped or contoured seat cushion



COMBINE WITH A BASE THAT WORKS...

The Triton seating system can be ordered in combination and configured with both the powered and manual base options. Whether you choose a manual or powered wheelchair, the Triton is available on the order form and is crash tested and passed to ISO 7176-19.

Zippie Salsa M powered wheelchair – Triton One is available with our most popular powered wheelchair. The Zippie Salsa M is the best wheelchair in its class, with a small turning circle giving exceptional manoeuvrability and a great choice for both indoor and outdoor use. A tilt mechanism up to 30° is also available as an option.

NEW Zippie RS manual wheelchair – Triton One and Two are available with the NEW Zippie RS - the complete tilt-in-space wheelchair complete with 45° tilt for maximum pressure relief, a compact wheelbase for easy manoeuvrability and a unique rocker system making pressure redistribution even easier (even when sleeping).



UNIQUE TRITON PRODUCT FEATURES

- **Precision positioning** - With a number of options available to cater for clinical requirements, changing needs and growth.



Dynamix



Independent sacral pad



Split seat depth



Adjustable laterals



Adjustable hip guides

- **Modularity** - Each component of the seating system can be interchanged for precise requirements, changes in posture, growth or re-issue.

- **Easy adjustment** - Everything is adjustable by hand or one 4mm Allen Key.

- **Easy ordering** - Order the Triton seat and base wheelchair integrated and assembled. Saving time, money and hassle!



SUPERIOR DYNAMIX™

The unique dynamic back is easily adjusted to control the level of resistance the user feels as they extend in the chair. Whereas most dynamic chairs use traditional spring action mechanisms, the Triton superior dynamic back uses an air pressure controlled gas cylinder. The rebound is also adjustable so the back moves in harmony with the user rather than pushing them forward as they relax. Triton's unique features give the chair a controlled gentle movement with the flexibility to adjust the system as the user grows, presents differently or if the system needs to be re-issued.

The dynamic mechanism works independently to the chair's reclining back. A locking function can be simply engaged for periods of feeding, transferring and transportation.

Lock / unlock the dynamic back.



Adjust the recoil.



CONTROLLED PELVIC POSITIONING

In conjunction with the hip supports, the wide range of adjustment in the sacral pad allows you to position the pelvis precisely. As well as accommodating adjustment for anterior and posterior positioning, the sacral pad can be adjusted to accommodate rotation. This can be used to support a fixed position or assist with a rotating pelvis. In relation to the reclining and dynamic back functions the sacral pad works independently. This maintains a precise pelvic positioning as the backrest moves.



Dynamix™ Footplates

Takes away the force of impact and provides sensory feedback for the comfort of the user.



TILT-IN-SPACE

Combining a market leading seating system with key products offers users the benefits of postural management with exceptional pressure relief through tilt-in-space.



The Zippie RS features 45° of tilt, using our patented rotation in space technology, the user is rotated around their own centre of gravity maintaining a short wheelbase and a more fluid motion. The push bar is also adjustable in length and angle making it simple to get an ergonomic setup for the carer regardless of tilt angle.



The Zippie Salsa M features an optional 30° on an exceptional mid-wheel-drive base.





ZIPPIE SALSA M



The Triton interface can be relocated backwards to allow growth. This also means the Triton seat always lines up with the front of the wheelchair.

ZIPPIE RS



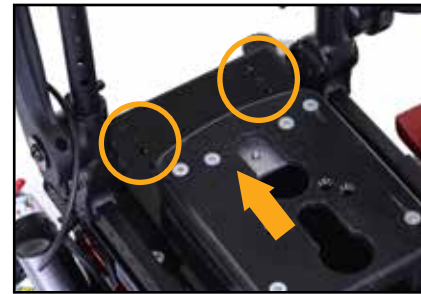
TRITON ADJUSTMENTS

SEAT DEPTH



Seat Depth

The seat depth can be adjusted using the 4mm Allen Key, loosen the fixing on each side (or individually to cater for a leg length discrepancy). Pull the seat forward to the desired length and tighten to fix.



Salsa Seat Depth

Once the Triton seat has been adjusted forward you may need to adjust the composite interface plate on the Salsa backwards. This will keep the front of the Triton seat in relation to the front of the Salsa.



Split Seat Depth

Each side can be adjusted individually to accommodate leg length discrepancies.

SEAT WIDTH



Seat Width

The 4mm Allen Key can be used to loosen the fixing so that the hip guides can be moved laterally to fit or grow the seat.



Hip Guide Angle

Using the hand wheel to loosen the hip guides will allow you to change the angle and accommodate for abduction in the legs.



Inner and Outer Thigh Guides

This adjustment can allow for users that are "frogging" or "windsweeping".

TRITON ADJUSTMENTS



Headrest Angle

Simply unscrew the hand lever to set the desired angle and position.



Headrest Height

Unscrew the hand wheel and adjust to the setting required.



Shoulder Protractor Angle

Loosen the hand wheel to change the angle of the protractor.



Shoulder Protractor Width

Use the 4mm Allen Key provided to adjust the width of the shoulder protractors.



Back Angle

The back angle can be independently adjusted from the dynamic back and reclined. Pull the hand levers located at the bottom of the wheelchair while setting the desired angle.



Sacral Pad

The angle and depth of the sacral pad can be adjusted to suit the users requirements. The angle can be adjusted both horizontally and laterally to accommodate pelvic obliquities and rotations.



Lateral Height

The 4mm Allen Key can be used to adjust the height of the lateral. These can be unilaterally offset for unique positioning.



Swing-Away Lateral

Pull the indexing pin under the lateral to swing it away.



TRITON ADJUSTMENTS



Back Height

The back height can be adjusted for growth or re-issue.



Armrest Height

The armrest can be set to the correct height. The adjustment above is featured in combination with the Zippie RS. When using a Zippie Salsa M the wheelchairs armrests are used, these can also be height and angle adjusted.



Armrest Angle

Using the hand wheel to loosen and re-set, this adjustment is available on the Zippie RS as the standard Salsa armrest is used on the Zippie Salsa M which can also be height and angle adjusted.



Footrest Angle

Cater for planter/dorsi flexion by loosening the hand wheel (bolt on the Zippie Salsa M) to set the required angle of the footrest.



Footrest Width

Pulling the index pin on the underside of the footrest will allow you to move the footrest laterally, increasing or decreasing the space between each footrest.



Footrest Height

This can be adjusted by pulling the pin and moving the footrest up and down the leg stem. This unit may also be disassembled and flipped to gain more range.



Footplate Positioning

Loosen the bolts from the top of the footplate to alter the depth and lateral position.



Leg Stem Angle (Zippie RS)

If the index pin under the seat is pulled the angle of the leg stem can be set. For individual leg stem adjustment the individual leg stems must be chosen. Offers unilateral lower limb positioning.



TRITON ADJUSTMENTS



Inner/Outer Thigh Guides - Width

The leg guides can be adjusted laterally across the seat, this way they can be set apart or brought together.



Inner/Outer Thigh Guides - Angle

The lateral angle can be set to accommodate the user in combination with the width adjustment.



Inner/Outer Thigh Guides - Abductor

The above shows the leg guides set to full abduction and opposite angles for those who might frogleg.



TECHNICAL DATA

Triton on Zippie Salsa M (Powered)

Maximum user weight:	75kg
Seat width (Triton 1):	15 - 24cm (31.5cm)*
Seat depth (Triton 1):	20 - 35cm
Chest breadth:	15 - 43cm
Seat to shoulder:	30 - 68cm
Lower Leg Length:	20.5 - 42cm

Backrest angle:	-5° to +25° Recline
Tilt-in-space:	0° to +30°
Wheelchair weight:	14.5kg
Colours (Triton/Salsa):	4 / 3 colours
Crash tested:	Yes

Triton on Zippie RS (Manual)

Maximum user weight:	110kg
Seat width (Triton 1 and 2):	15 - 33cm (39.5cm)*
Seat depth (Triton 1 and 2):	20 - 55cm
Chest breadth:	15 - 35cm
Seat to shoulder:	30 - 68cm
Lower Leg Length:	19 - 42cm

Backrest angle:	-5° to +25° Recline
Tilt-in-space:	0° to +45°
Wheelchair weight:	14.5kg
Colours (Triton/Zippie RS):	4 / 30 colours
Crash tested:	Yes

* Measurement when hip guides are removed

For further information on product options, please check the order forms on our website.
You can view this document in a larger font as a PDF file at www.SunriseMedical.co.uk

 www.facebook.com/QuickieWheelchairsUK  www.youtube.com/quickiewheelchairseu



Sunrise Medical Limited
Thorns Road, Brierley Hill, West Midlands, DY5 2LD
Tel.: +44 (0) 845 605 66 88 Fax: +44 (0) 845 605 66 89
E-mail: enquiries@sunmed.co.uk
www.SunriseMedical.co.uk